



GAMMON TECHNICAL PRODUCTS, INC.
 P.O. BOX 400 - 2300 HWY 34
 MANASQUAN, N.J. 08736

PHONE 732-223-4600
FAX 732-223-5778
WEBSITE www.gammontech.com
STORE www.gammontechstore.com

**MISCELLANEOUS
 SUPPLIES**

**BULLETIN 71
 (01-21)**

MISCELLANEOUS SUPPLIES

McCABE WATER FINDING PASTE

To find the level of water in a tank, wipe a thin film of paste on a gauging stick and lower it to the bottom of the tank. When you remove the stick, the green paste will change color where it is contacted by water. The water level will show in red.



WATER FINDING PASTE (3 oz. jar - 85 g.)
 GTP-982-1 WATER PASTE - 1 JAR
 GTP-982-12 WATER PASTE - 12 JARS
 GTP-982-144 WATER PASTE - 144 JARS

KOLOR KUT FUEL INDICATING PASTE



Fuel Indicating Paste shows fuel level in a tank. Wipe a thin film of paste on a gauging stick and lower it to the bottom of the tank. When you remove the stick, the lavender-colored paste will change color where it is contacted by fuel. The fuel level will show as red.

FUEL INDICATING PASTE (2.25 oz. jar - 62 g.)
 GTP-1322K-1 FUEL PASTE - 1 JAR
 GTP-1322K-12 FUEL PASTE - 12 JARS
 GTP-1322K-144 FUEL PASTE - 144 JARS

WATER FINDING PASTE 3 oz. TUBES

Changes from golden brown to red.

GTP-3908-1 1 TUBE
 GTP-3908-12 12 TUBES
 GTP-3908-144 144 TUBES



MODIFIED WATER FINDING PASTE (MIL-W83779)

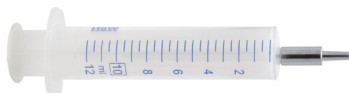
For fuel with anti-icing additive - 2.5oz TUBES

Changes from dark brown to red.

GTP-3908M-1 1 TUBE
 GTP-3908M-12 12 TUBES
 GTP-3908M-144 144 OZ TUBES

SYRINGES FOR SHELL WATER DETECTOR TEST

We offer two sizes of high-quality syringes for performing Shell water detector testing.



JM-3765A-10 10mL



JM-3765A-5 5mL

SAFETY WIRE

Quality stainless steel safety wire. Annealed (softened) for easy use. Dispenses neatly from top of 1 lb. box.

GTP-1924 .032"
 GTP-8124 .025"



AUTOMATIC SAFETY WIRE TWISTING TOOL

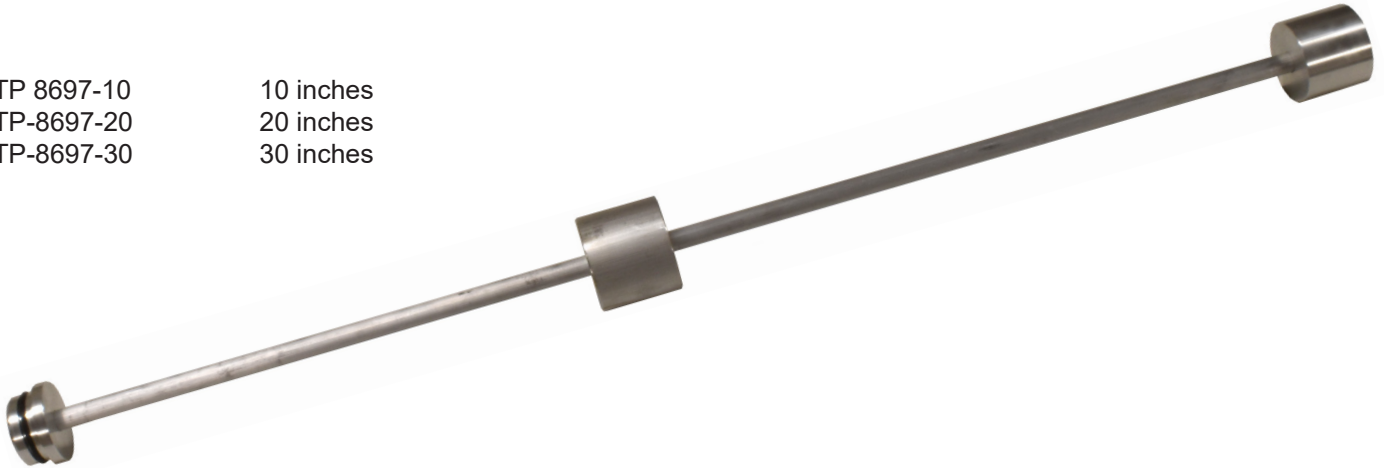
GTP-1924-2



DUMMY MONITOR ELEMENTS

When reducing the number of elements, a “dummy” or non-functional element can be used to fill unnecessary element mounts. Our “dummy” elements are carefully machined from high grade aluminum and designed to replace any brand of 2” outside diameter element in any vessel. The seal is a Viton o-ring. Includes an adjustable center “rest” to allow easy installation in vessels with element aligning guides. Needs no additional hardware, works with cover interlocks.

GTP 8697-10 10 inches
GTP-8697-20 20 inches
GTP-8697-30 30 inches



SPECIAL LUBRICANTS

GTP-9188: AVIATION-GRADE SWIVEL & SEAL LUBE

Gammon Technical has packed this industry-accepted, FDA food-grade (CFR 172.880) petrolatum in handy 14.5 oz tubes, designed to fit standard grease guns, but can also be used on the bench.

NOTE: Be careful when using a grease gun to lubricate a swivel. It is critical that excessive lubricant **NOT** be injected. Excess lube can find its way into the fuel, and this is not good. We strongly suggest all hose reel swivels and similar items be equipped with not only a grease fitting, but a relief as well. This prevents grease pressure from building up inside, and possibly allowing grease to enter the fuel. **DO NOT** apply excessive grease. Rotate the swivel as you grease it for best results.



TL-9653: STATICLUBE

StaticLube is a lubricant specifically designed to conduct electricity. It is made with a high-quality synthetic lubricant and filled with super-fine silver for electrical conductivity. It is not silicone based. It is highly thermally conductive to help protect bearings. It blocks corrosion and protects bearing surfaces from water.

StaticLube can also be used on electrical connections and is especially helpful when bonding a static reel to steel framework-creating a long-lasting electrical bond virtually immune to corrosion and weather.

StaticLube comes in 1cc syringes, which will lubricate up to three static reels. Made in the USA.

